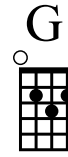
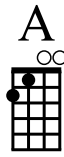
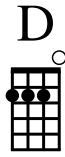
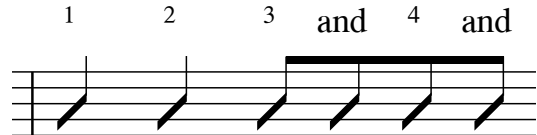


## BAD MOON RISING - Creedence Clearwater Revival



STRUM



down down down up down up

### INTRO

*D//// A// G// D//// D////*

### VERSE 1

*D//// A// G// D//// D////*

I see the bad moon rising

*D//// A// G// D//// D////*

I see trouble on the way

*D//// A// G// D//// D////*

I see earthquakes and lightning

*D// A// G// D//// D////*

I see bad times today

### CHORUS

*G//// G////*  
Well don't go around tonight

*D//// D////*

It's bound to take your life

*A//// G//// D////*

There's a bad moon on the rise

### VERSE 2

*D//// A// G// D//// D////*

I hear hurricanes a-blowing

*D//// A// G// D//// D////*

I know the end is coming soon

*D//// A// G// D//// D////*

I fear rivers over flowing

*D//// A// G// D//// D////*

I hear the voice of rage and ruin

### CHORUS

*G//// G////*  
Well don't go around tonight

*D//// D////*

It's bound to take your life

*A//// G//// D////*

There's a bad moon on the rise

### SOLO

D/// A// G// D/// D///  
D/// A// G// D/// D///  
G/// G/// D/// D///  
A/// G/// D/// D///

### VERSE 3

D/// A// G// D/// D///  
Hope you got your things together  
D/// A// G// D/// D///  
Hope you are quite prepared to die  
D/// A// G// D/// D///  
Looks like we're in for nasty weather  
D/// A// G// D/// D///  
One eye is taken for an eye

### CHORUS

G/// G///  
Well don't go around tonight  
D/// D///  
It's bound to take your life  
A/// G/// D///  
There's a bad moon on the rise  
G/// G///  
Well don't go around tonight  
D/// D///  
It's bound to take your life  
A/// G/// D/// Dstop  
There's a bad moon on the rise